



## **Installation manual Eding CNC Software**

## Document History

Version	Date	Author	Comment
1	24-sep-2019	Alfred Bos	Initial version

© Copyright Eding CNC B.V.

All rights reserved. Reproduction in whole or in part prohibited without the prior written consent of the copyright owner.

# Table of contents

Table of contents .....	3
1 Minimum PC requirements .....	4
2 Installation of Eding CNC .....	5
3 Setting up Ethernet interface. ....	15

# 1 Minimum PC requirements

- 1.4 GHz Atom.
- Pentium, dual core recommended for Ethernet.
- Minimum 4GB.
- **Windows 7/8/10**, 32 or 64-bit.
- Minimum Screen resolution 1024 x 768.
- Graphics card with Open GL support is preferred.
- USB connection
- 100Mbit Ethernet card for Ethernet controllers.

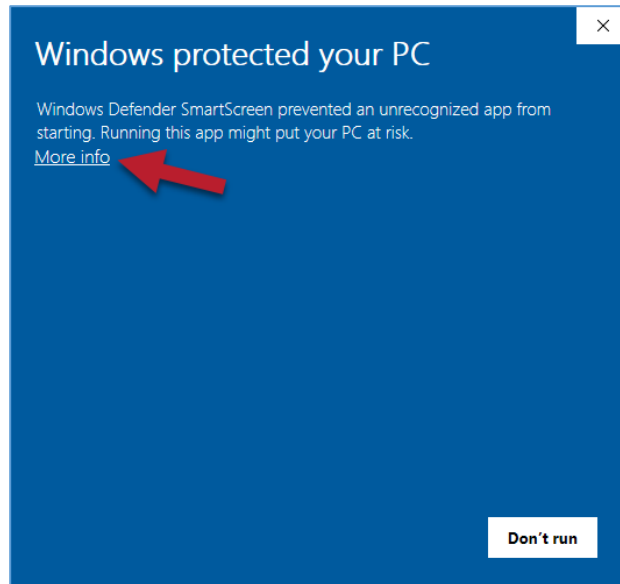
Please note, Windows XP may also work but is no longer actively supported.

## 2 Installation of Eding CNC

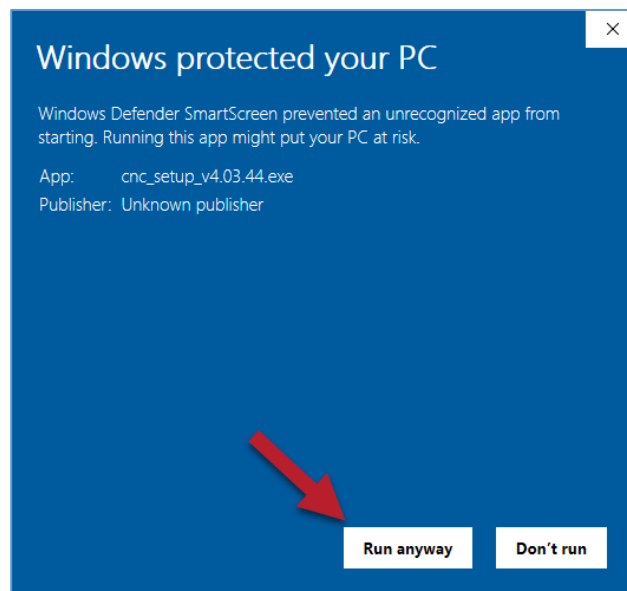
The first step is downloading the software. The software can be found on our website.

When the installation executable has been downloaded, click on the downloaded file to start the installation.

Windows 10 may display a pop-up as seen below. To start the installation first press 'More info'.

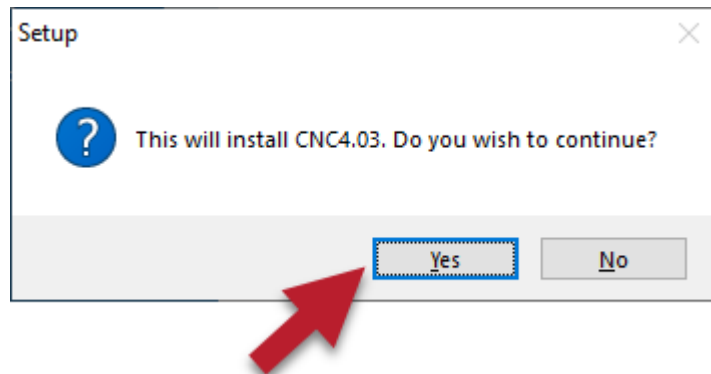


And press on 'Run anyway'.

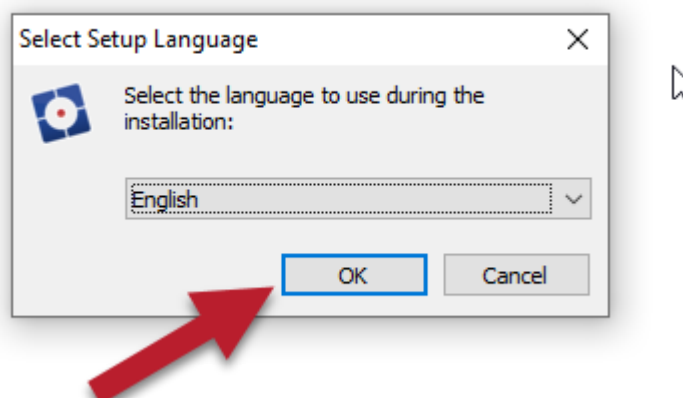
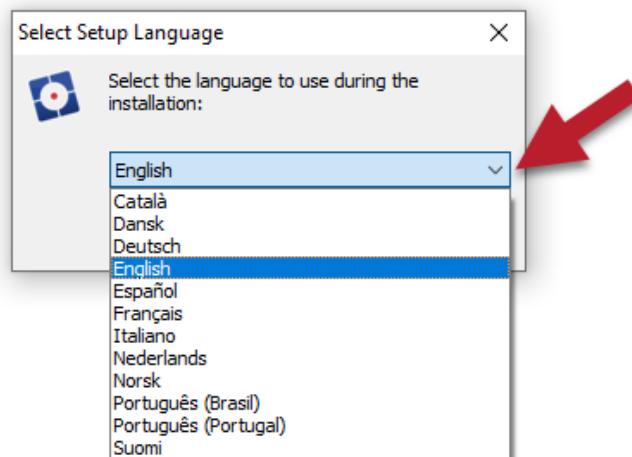


The installation of the software will start.

When the installation starts a window will be presented, to start the installation click on 'Yes'.



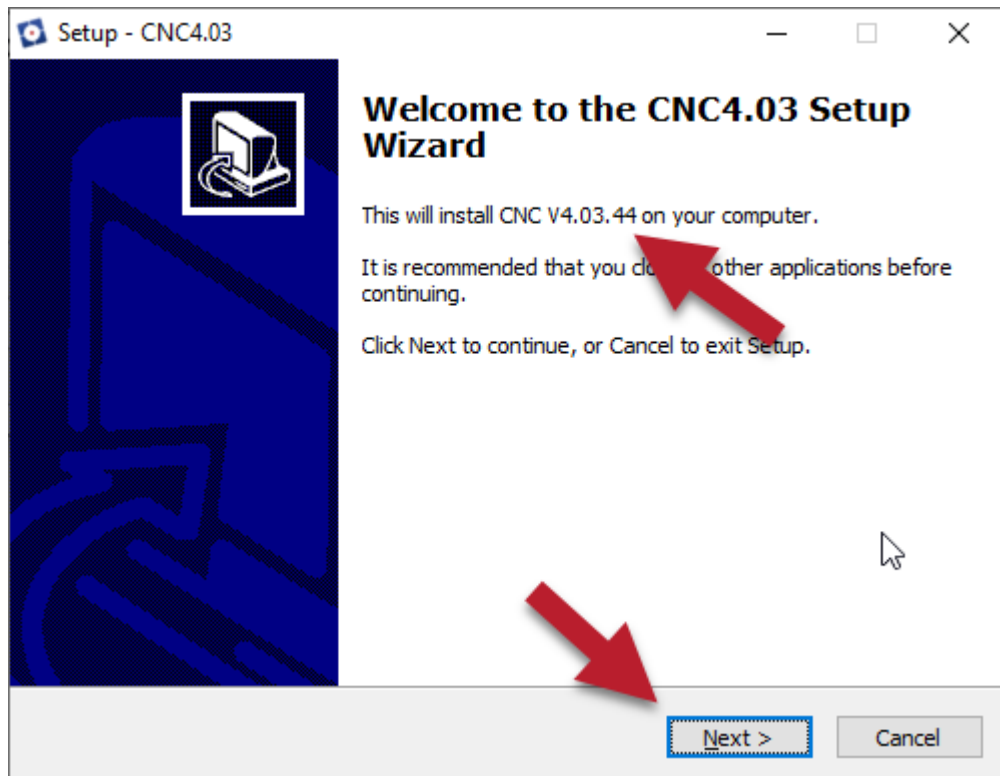
The installer will start by asking the language for the installation. Select your preference and press 'OK to continue.



The installation wizard will show you what release of the software it is about to install.

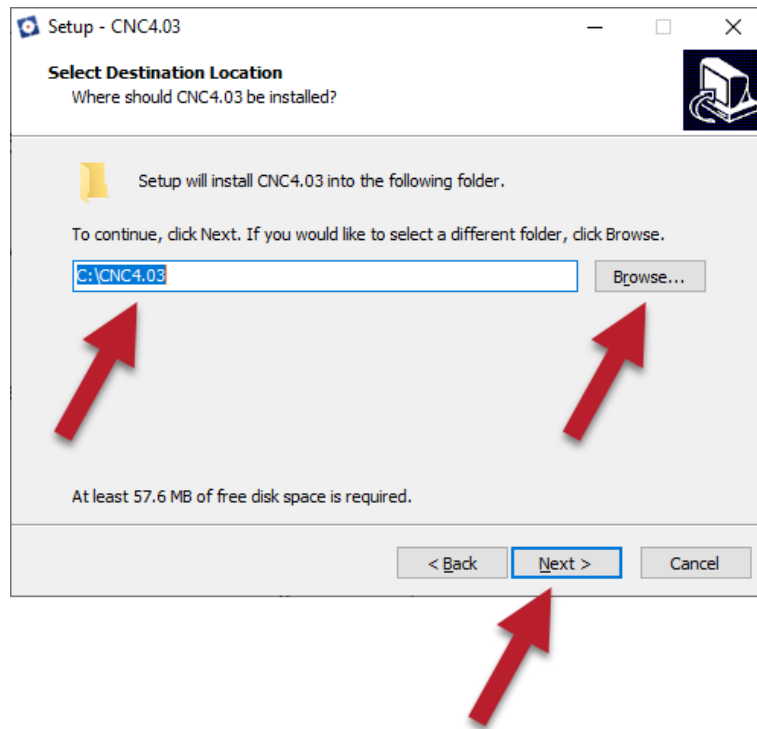
Please note, later we show how you can simply install different versions of the software which are in clearly marked folders.

In this example the version is 'V4.03.44'.

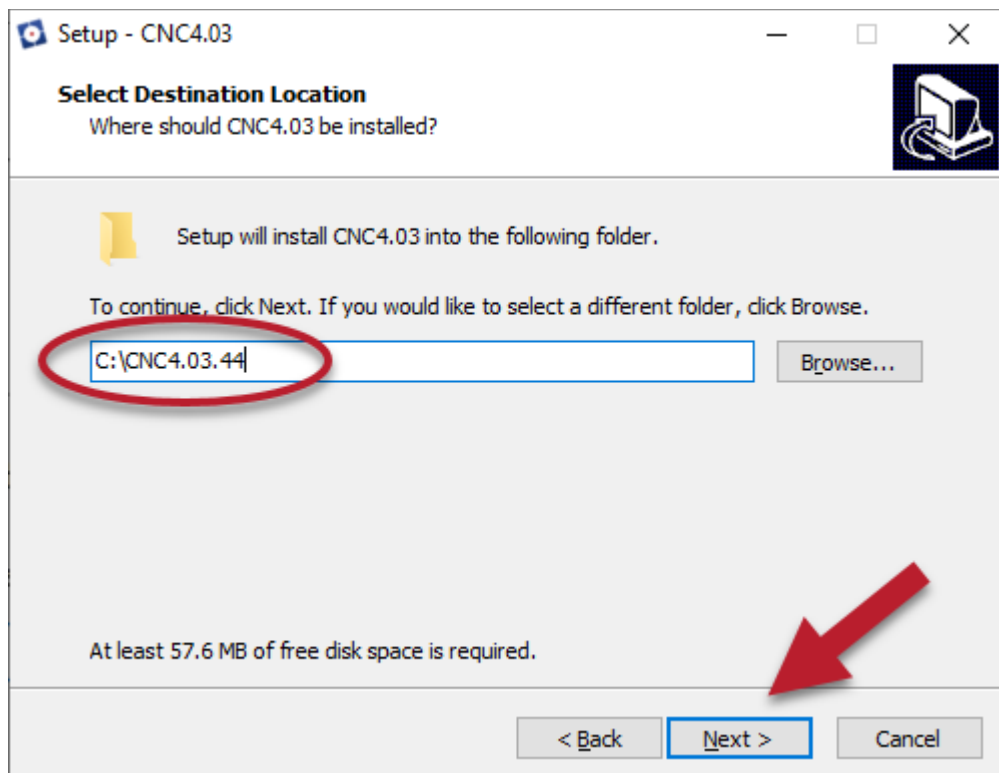


To continue, press 'Next'.

The installation location is shown. In this case the software will be installed in folder 'C:\CNC4.03'. If you want to change this, you can click on 'Browse...' and select a different folder.

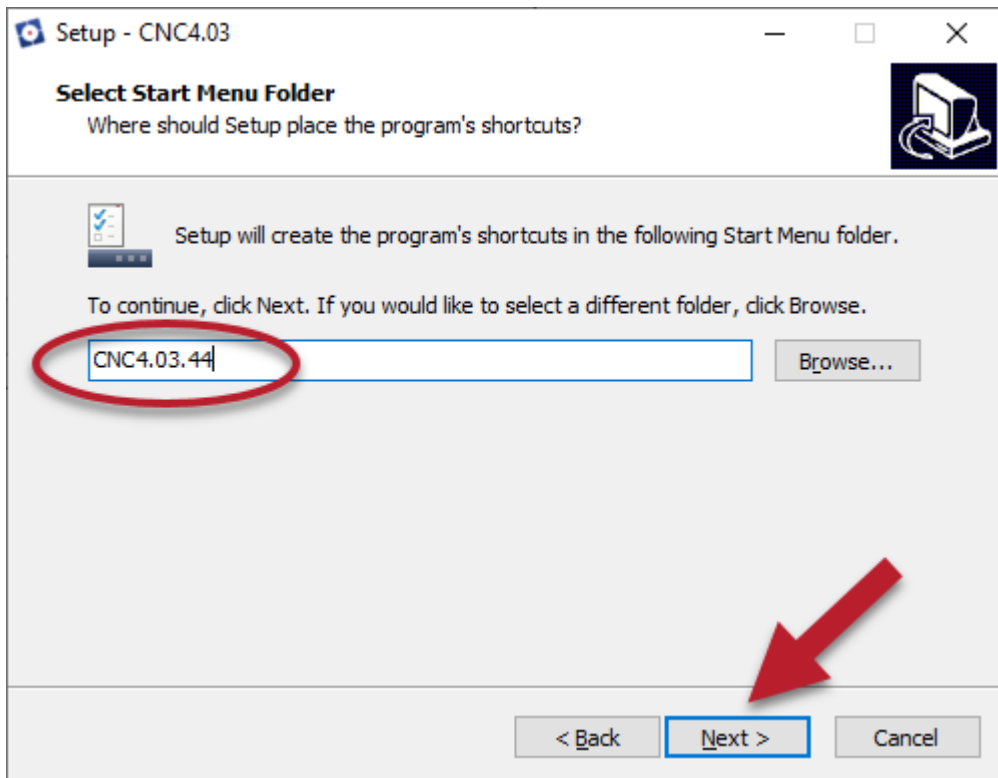


You might also want to rename the folder to reflect the version number. After this press again on 'Next' to continue.

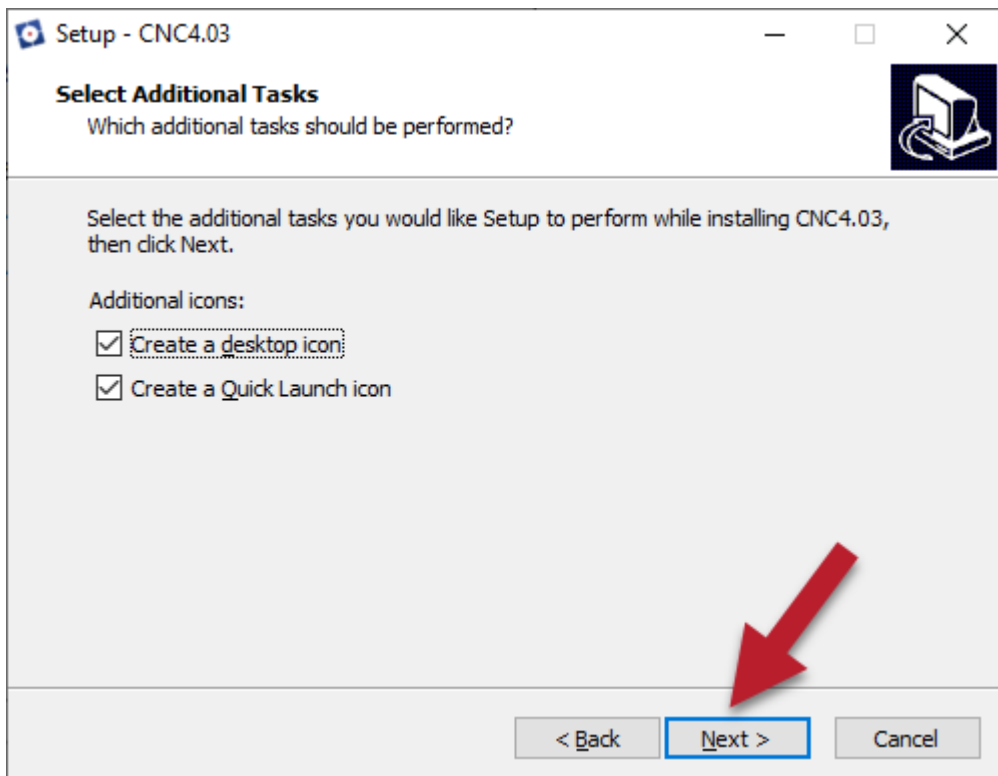


The next step is the name of the 'Start Menu Folder', preferable use the same name as you have used in the previous screen. And continue by pressing 'Next'.

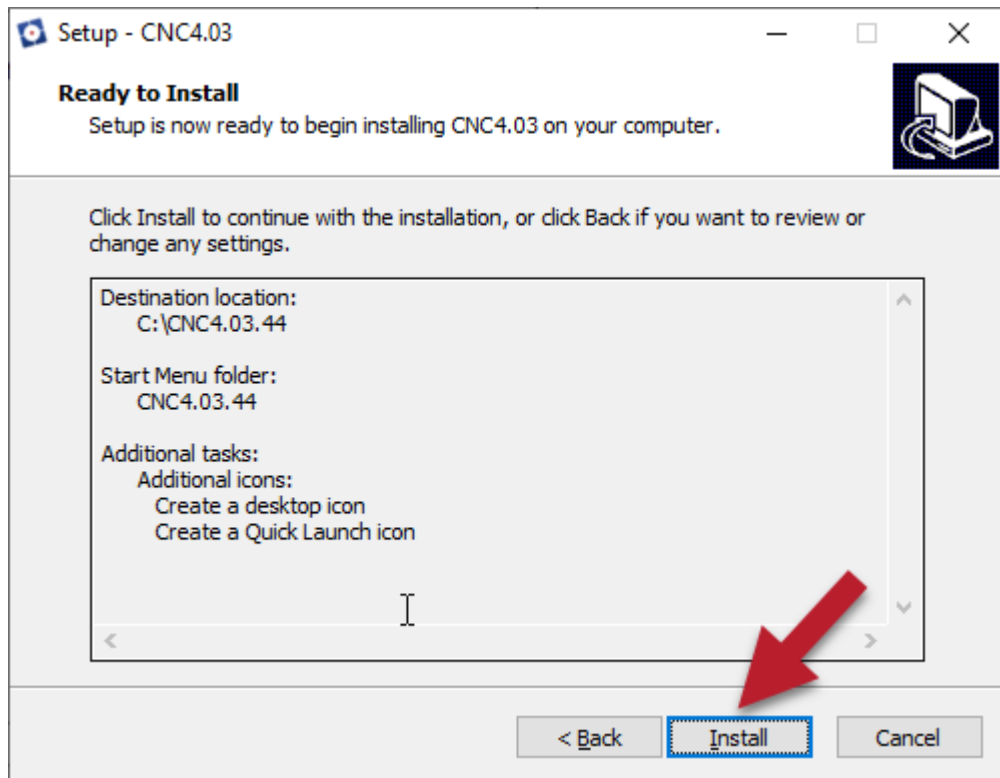




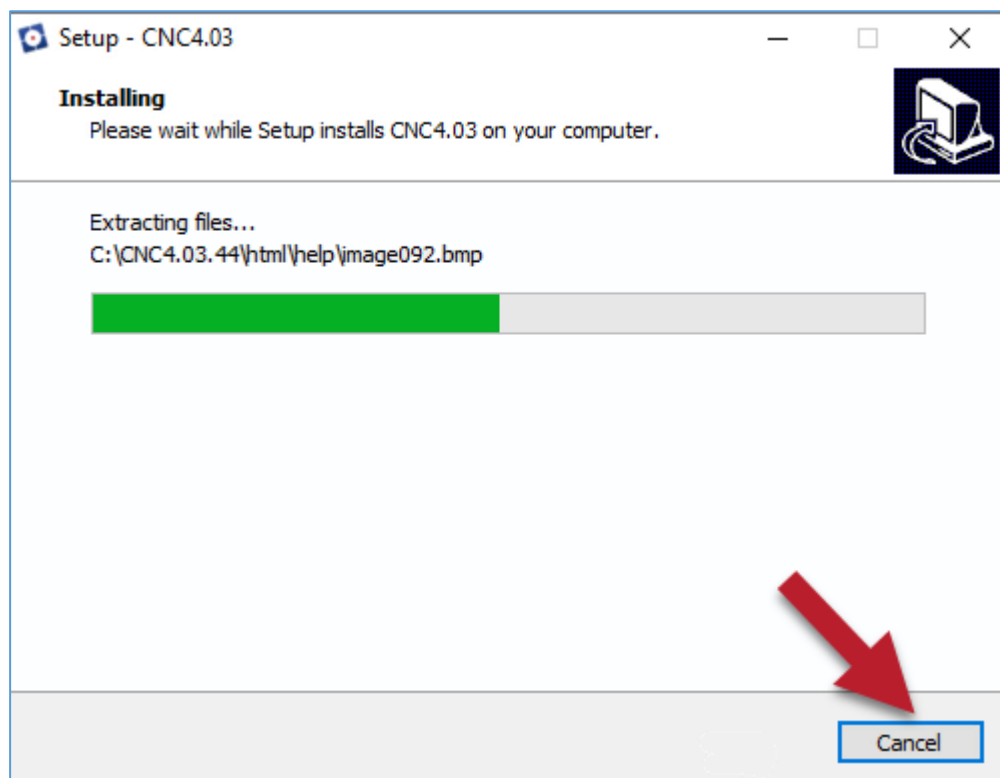
The next screen will ask whether you would like to create a desktop icon and/or quick launch icon, make your selection and press 'Next'.



In the last screen of the installation an overview is shown of the selected settings for installation. Click 'Install' to start the installation.

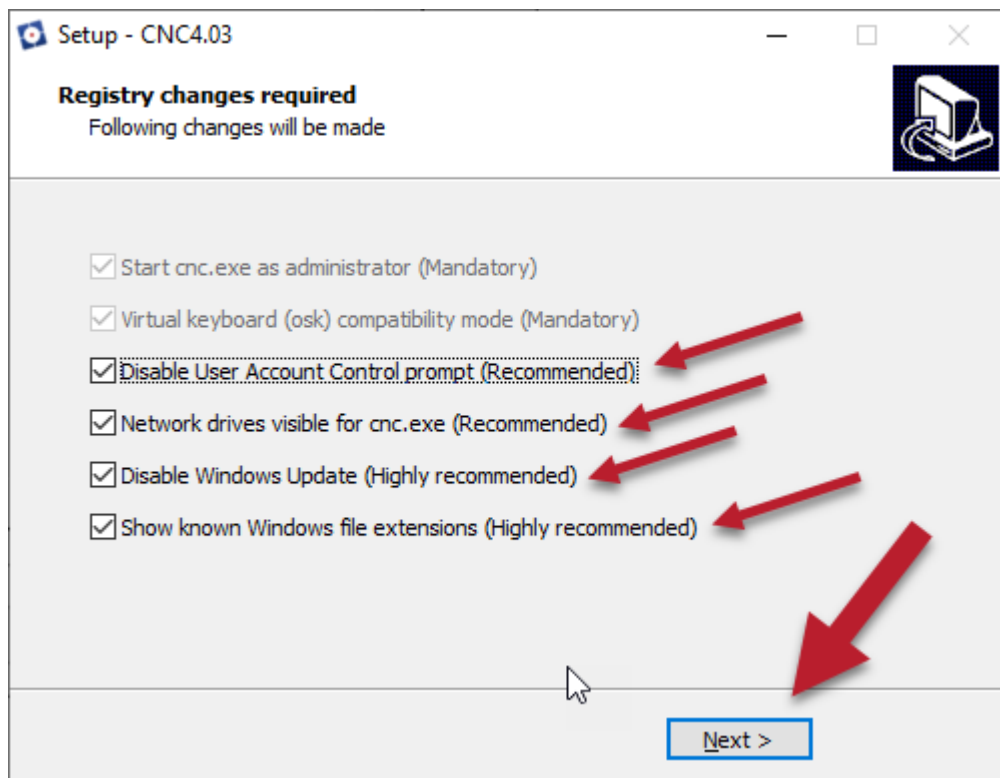


The progress of the installation can be monitored. It can be stopped by clicking on 'Cancel'.



When the installation has finished, a new window appears in which several options can be selected.

These settings will help you in using the software, some are mandatory others are optional; though recommended.



The options that are greyed out are mandatory.

The settings are:

- ***'Start cnc.exe as administrator'***

This setting is mandatory because the software must be started as administrator to make sure it will have the maximum performance of the system allocated. Without it the software will not start.

- ***'Virtual keyboard (osk) compatibility mode'***

This option makes sure that the virtual keyboard can be used in the software.

- ***'Disable User Account Control prompt'***

This still stop Windows to interfere with the installed the application, you can deselect the option. However, the OS can ask you whether you are sure you want to start the software. Which can be very annoying.

- ***'Network drives visible for cnc.exe'***

By default, applications running in administrator mode cannot see the network drives from the logged in user.

- ***'Disable Windows Update'***

Disabling Windows Update is highly recommended, because you do not want windows to update and interrupt a 200 hour cnc job. Better update Windows manually when you want to.

- ***'Show known Windows file extensions'***

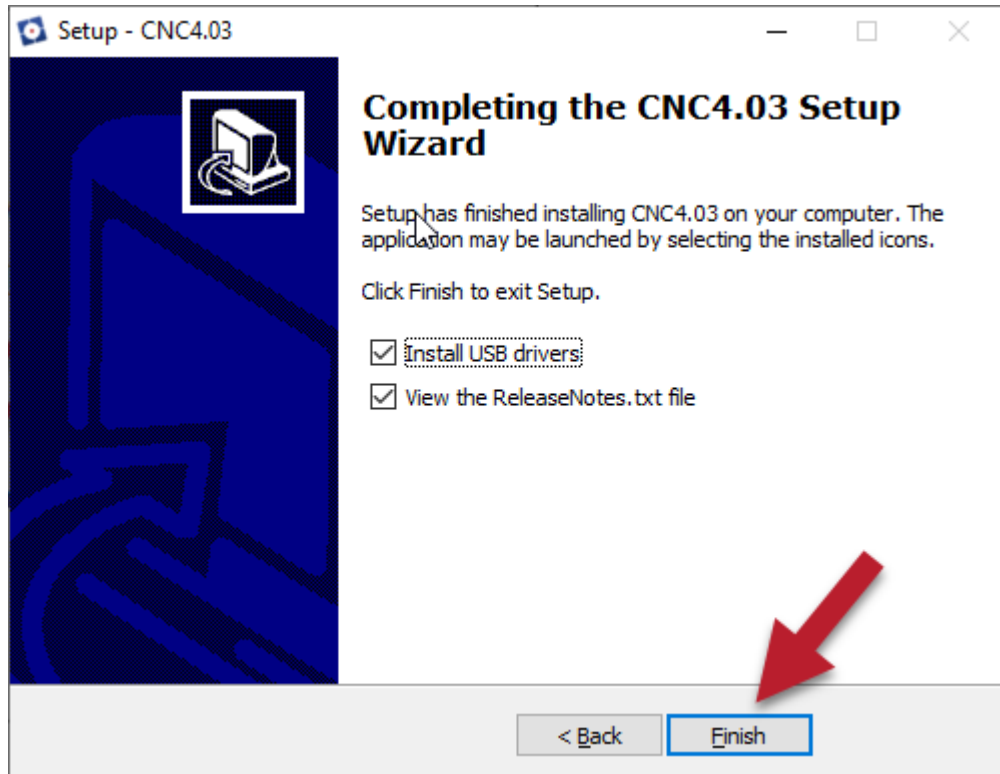
This will help in recognizing files and selecting the correct files by showing the extension of the files. For example, 'mickey.cnc' or 'cnc.ini'. Although not vital, it is strongly advised to enable it to help you operating the software.

By clicking on 'Next' these settings will be set.

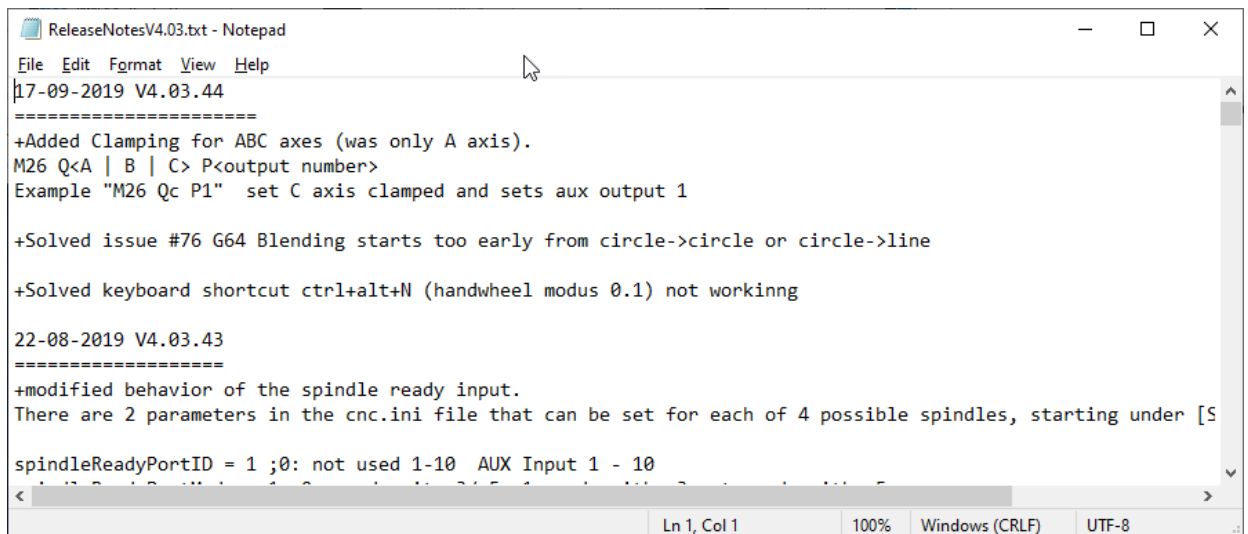
## FINAL STEP, INSTALLING USB DRIVERS.

The final step of the installation is installing the USB drivers. This is also done through a simple installer. You can select whether you want to install the USB drivers or/and view the release note for the software. When this is the first time to install the software, make sure you also install the USB drivers. Click on 'Finish' to finalize the installation.

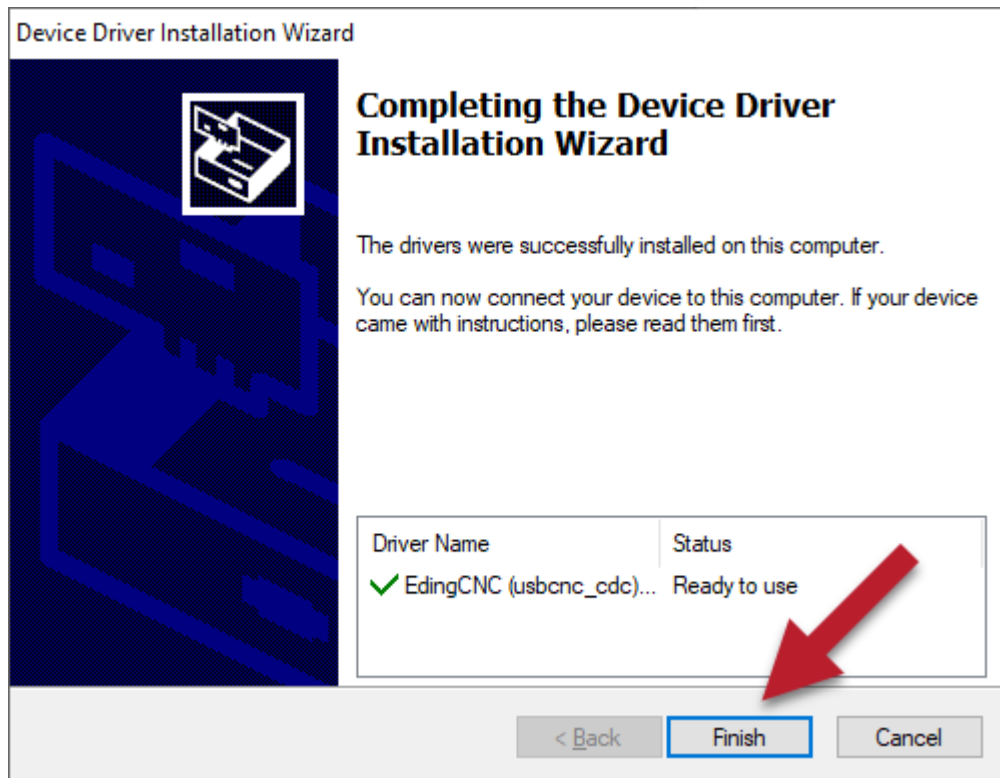
2.1



If 'View the ReleaseNotes.txt' is selected, immediately after pressing 'Finish' the release note will be shown. In the release note you can read what has changed or is new for this release of the software. Below is a part of a release not shown.



When you selected to install the USB driver it will show this with the windows that is shown below. Simply click on 'Finish' to exit this.



Please note, the driver will contain the name USBCNC, this is old name of Eding CNC.

After the installation please reboot the PC. After rebooting, connect the controller, you will see that Windows has found an Eding CNC COM-port if you are using an USB based controller.

You can check that the USB driver is correctly installed in Windows device manager, on Windows 10, press **Windows key + X**, then choose device manager.

This will show the device manager. If a USB based controller is connected it will show under 'Ports' as 'USBCNC COM Port' the port that is indicated, in this case COM17, may vary per installation.



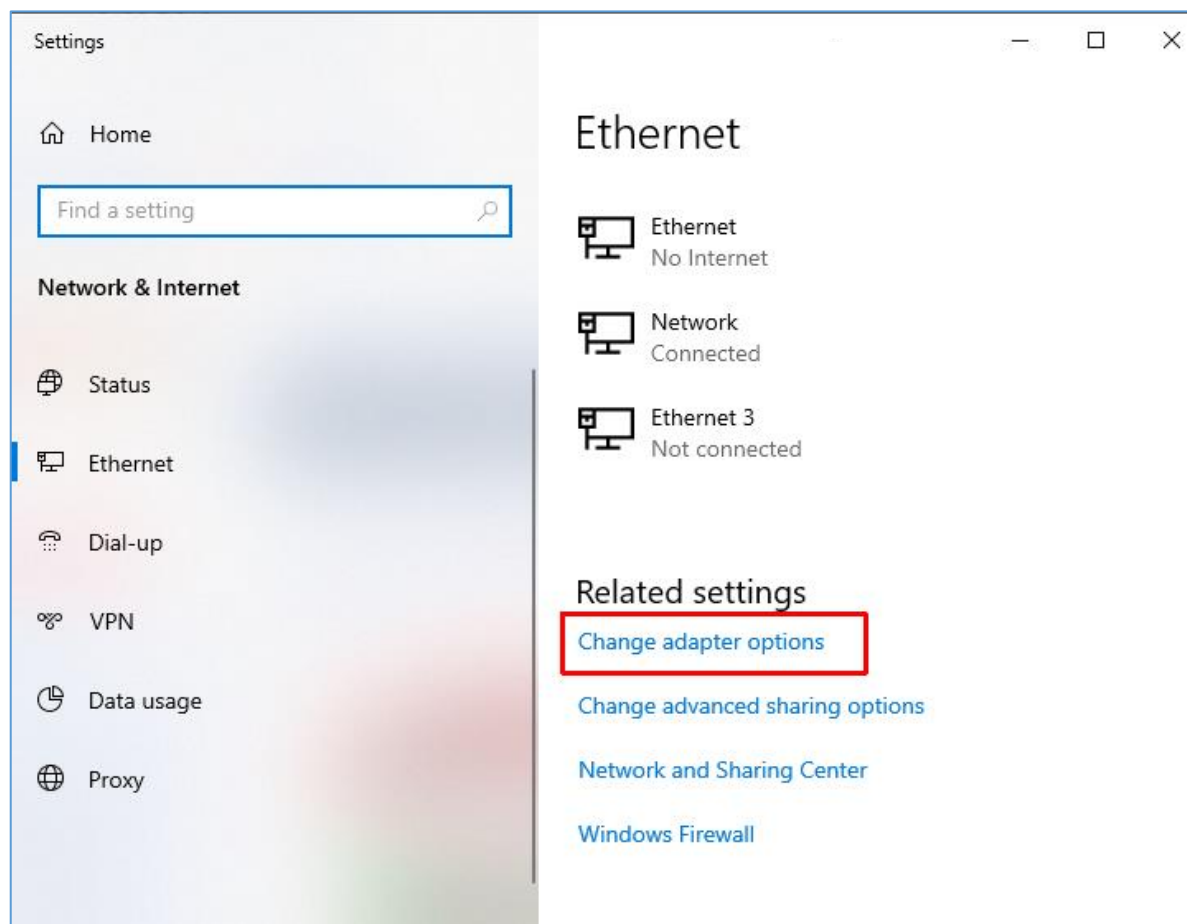
### 3 Setting up Ethernet interface.

This chapter is only relevant if you use a controller with an Ethernet interface.

For Ethernet you need a free Ethernet port on the PC. If you use a PC that needs to be connected to the local network as well as connected to an Ethernet controller add a second network card. Optionally, you could perhaps also use the WiFi to connect to your local network if you are unable to add an extra network interface.

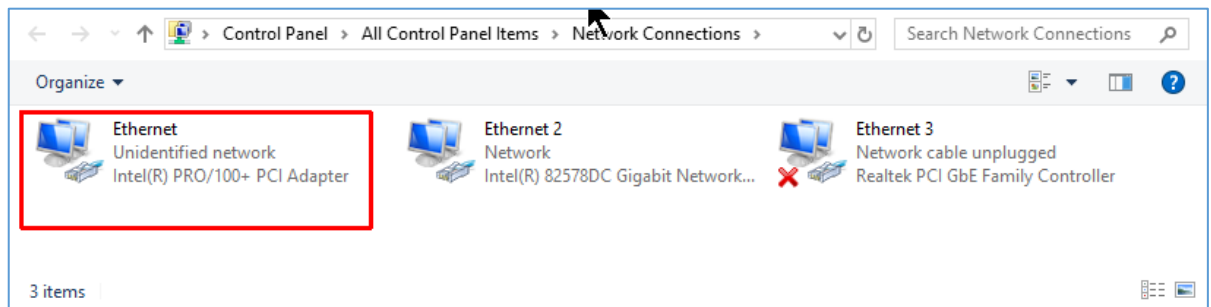
Connect the controller using a 100 Mbit Ethernet **cross** cable. Then setup the Ethernet adapter. Go to the windows network settings, on Windows 10, **Windows key + X**, then choose **Network Connections**. In the window that appears select **Ethernet**.

A window as shown below will appear.

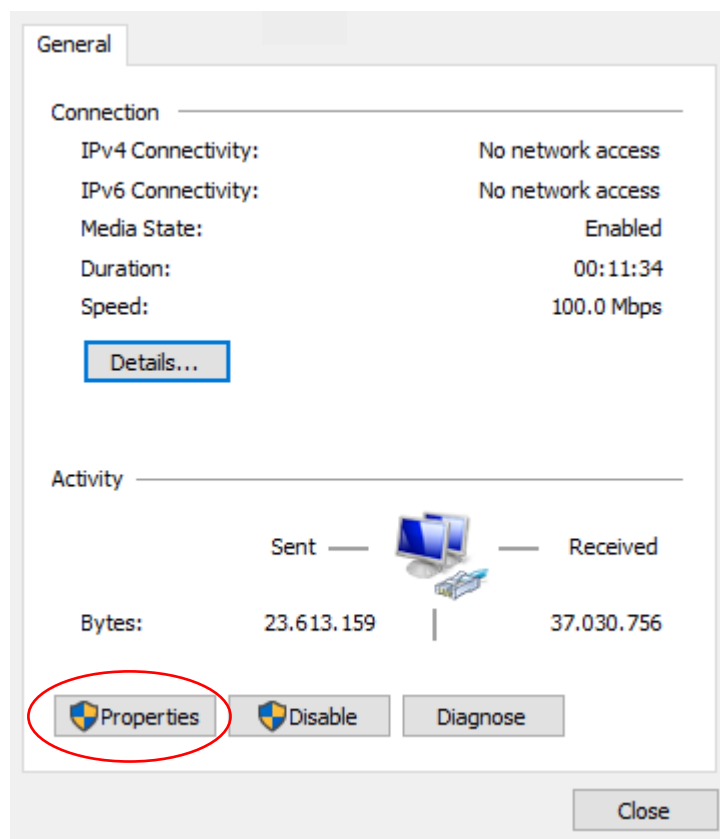


In this case you see 3 network cards, because this PC has 3 Ethernet ports.

Select '**Change adapter options**'. A window showing the available network interface opens



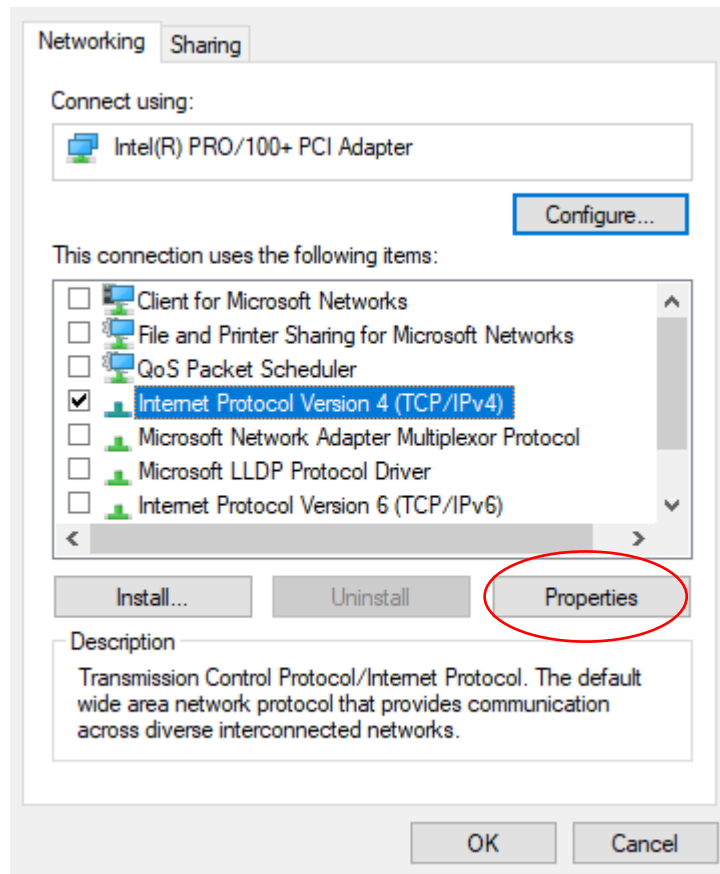
Double click the adapter card where the Eding CNC controlle is connected, you can recognize it because it shows "**Unidentified network**". A new window appears showing more detailed information about the Ethernet port.



The next step is configuring this Ethernet port, click on "**Properties**".

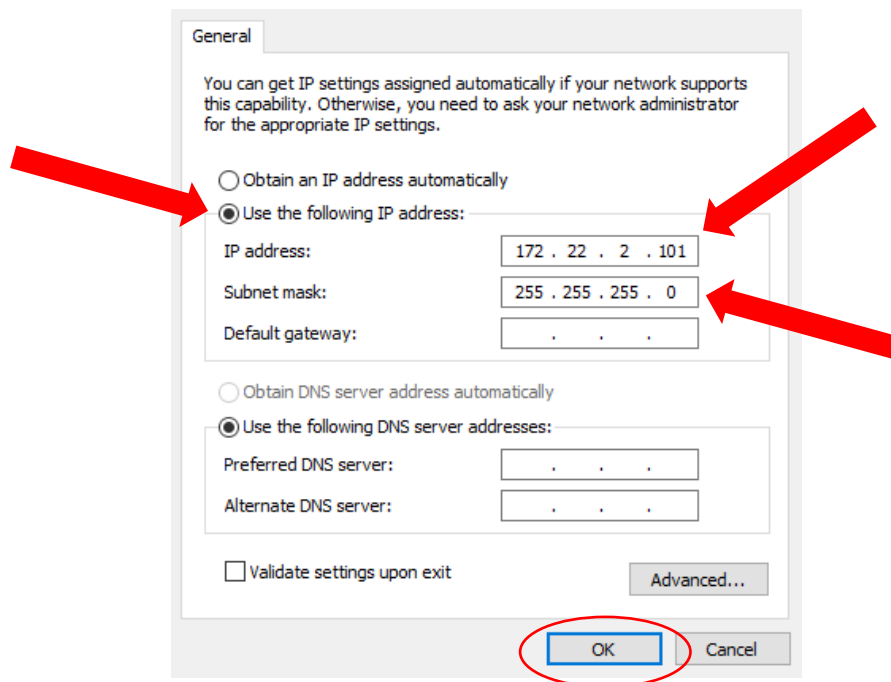


The window that opens shows detailed information about the network interface. Make sure you deselect all items except the item **“Internet Protocol Version 4 (TCP/IPv4)”**.



Next, select the line **“Internet Protocol Version 4 (TCP/IPv4)”** and click on **“Properties”**.

A window will appear showing TCP/IP settings of this protocol. And set the following settings:



The **computer** uses the IP address **172.22.2.101**. Normally, by default, the **controller board** IP address is **172.22.2.100**. Press OK to close the window.

### Testing the communication

The communication with the controller board can be tested using the 'Ping' command.

In the Windows 10 search box type "**ping 172.22.2.100**". If the board is connected correctly it should respond to the ping command as shown below.

```
Microsoft Windows [Version 10.0.18362.295]
(c) 2019 Microsoft Corporation. All rights reserved.

C:\Users\Bert>ping 172.22.2.100

Pinging 172.22.2.100 with 32 bytes of data:
Reply from 172.22.2.100: bytes=32 time=1ms TTL=100
Reply from 172.22.2.100: bytes=32 time<1ms TTL=100
Reply from 172.22.2.100: bytes=32 time<1ms TTL=100
Reply from 172.22.2.100: bytes=32 time<1ms TTL=100

Ping statistics for 172.22.2.100:
    Packets: Sent = 4, Received = 4, Lost = 0 (0% loss),
    Approximate round trip times in milli-seconds:
        Minimum = 0ms, Maximum = 1ms, Average = 0ms

C:\Users\Bert>
```

When the connection fails, you will see:

```
C:\Users\Bert>ping 172.22.2.100

Pinging 172.22.2.100 with 32 bytes of data:
Request timed out.
Request timed out.
Request timed out.
Request timed out.

Ping statistics for 172.22.2.100:
    Packets: Sent = 4, Received = 0, Lost = 4 (100% loss),

C:\Users\Bert>_
```

If this occurs several things can be checked:

- Is the controller powered?
- Is there a cross cable connected between PC and controller?
- Is the board online, this is indicated by a LINK and ACTIVITY led on the controller
- Is the board active, this is indicated by flashing LEDs. Please refer to the hardware manual of the controller.