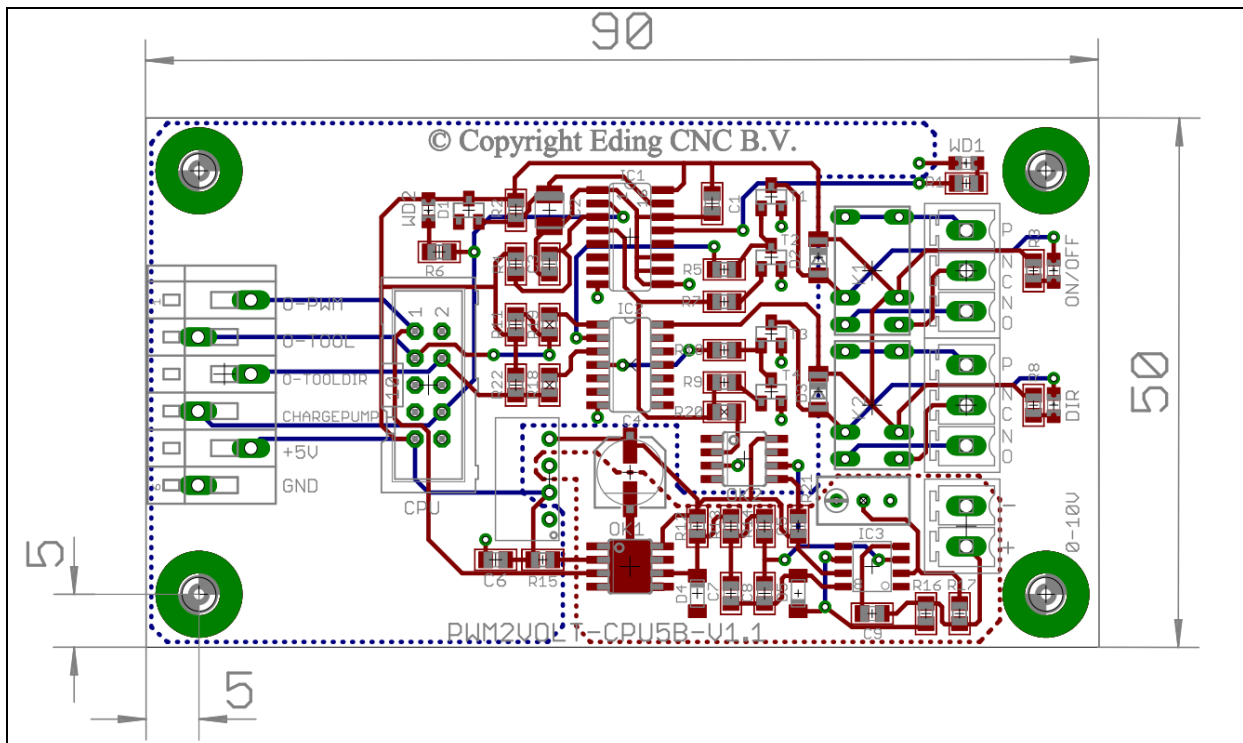


CPU5B PWM->VOLT Board for VFD connection



Features

- Input PWM, TOOL on/off, TOLDIR, watchdog (10Hz)
- Output relay contacts 1st for spindle on/off, relay contacts 2nd for spindle direction, 0-10V speed control.
- Fully isolated
- Watchdog protected, if software shuts down or communication fails, spindle is switched doff.
- 0-10V realized by DC/DC converter from CPU 5V, no extra supply needed.

Connector	Signal
<u>CPU</u> , flat cable to CPU5B CNC-OUT connector	PWM, TOOL, TOOL-DIR, WATCHDOG, +5V, GND
<u>ON/OFF</u> relay contact beside side ON/OFF LED Upper: P contact 2 nd : Normally closed contact. 3 rd : Normally open contact.	Spindle ON/OFF
<u>DIR</u> relay contacts, 3 beside DIR LED. Upper : P contact 2 nd : Normally closed contact. 3 rd : Normally open contact.	Spindle RIGHT/LEFT
<u>0-10V</u> Low 2 contacts at right side are 0-10V output for VFD. Upper of the 2 is -, lower is + Blue potentiometer allows adjustment of the 10V output. At 100% PWM, the signal should be exactly 10V	Spindle Speed